

CORRECTION

Open Access



Correction: Comparison of the tidal signatures in sporadic E and vertical ion convergence rate, using FORMOSAT-3/COSMIC radio occultation observations and GAIA model

Sahar Sobhkhiz-Miandehi^{1*} , Yosuke Yamazaki², Christina Arras², Yasunobu Miyoshi³ and Hiroyuki Shinagawa⁴

Correction: *Earth Planets Space* 74:88 (2022)
<https://doi.org/10.1186/s40623-022-01637-y>

Following publication of the original article (Sobhkhiz-Miandehi *et al.* 2022), the authors found errors in Figs. 5, 6, 7, and 8.

In the originally published PDF, there were errors in VIC calculation process. Thus, we have re-calculated VIC and updated the relevant figures. According to the new

Fig. 5, the seasonal variation of DW1 component of EsOR 20 at 110 ± 5 km is best correlated to that of VIC at 110 km rather than EsOR and VIC at other altitudes. Their correlation coefficient is 0.89, although it can decrease to as low as 0.2 at 100 km altitude. We note that in general a tidal component of EsOR tends to have the highest correlation with the same tidal component of VIC at altitudes higher than 105 km.

The original article can be found online at <https://doi.org/10.1186/s40623-022-01637-y>.

*Correspondence:

Sahar Sobhkhiz-Miandehi
sahar@gfz-potsdam.de

¹ GFZ German Research Centre for Geosciences, Faculty of Science
University of Potsdam, Potsdam, Germany

² GFZ German Research Centre for Geosciences, Potsdam, Germany

³ Yasunobu Miyoshi Kyushu University, Fukuoka, Japan

⁴ National Institute of Information and Communications Technology,
Tokyo, Japan



© The Author(s) 2023. **Open Access** This article is licensed under a Creative Commons Attribution 4.0 International License, which permits use, sharing, adaptation, distribution and reproduction in any medium or format, as long as you give appropriate credit to the original author(s) and the source, provide a link to the Creative Commons licence, and indicate if changes were made. The images or other third party material in this article are included in the article's Creative Commons licence, unless indicated otherwise in a credit line to the material. If material is not included in the article's Creative Commons licence and your intended use is not permitted by statutory regulation or exceeds the permitted use, you will need to obtain permission directly from the copyright holder. To view a copy of this licence, visit <http://creativecommons.org/licenses/by/4.0/>.

The correct Fig. 5 should be:

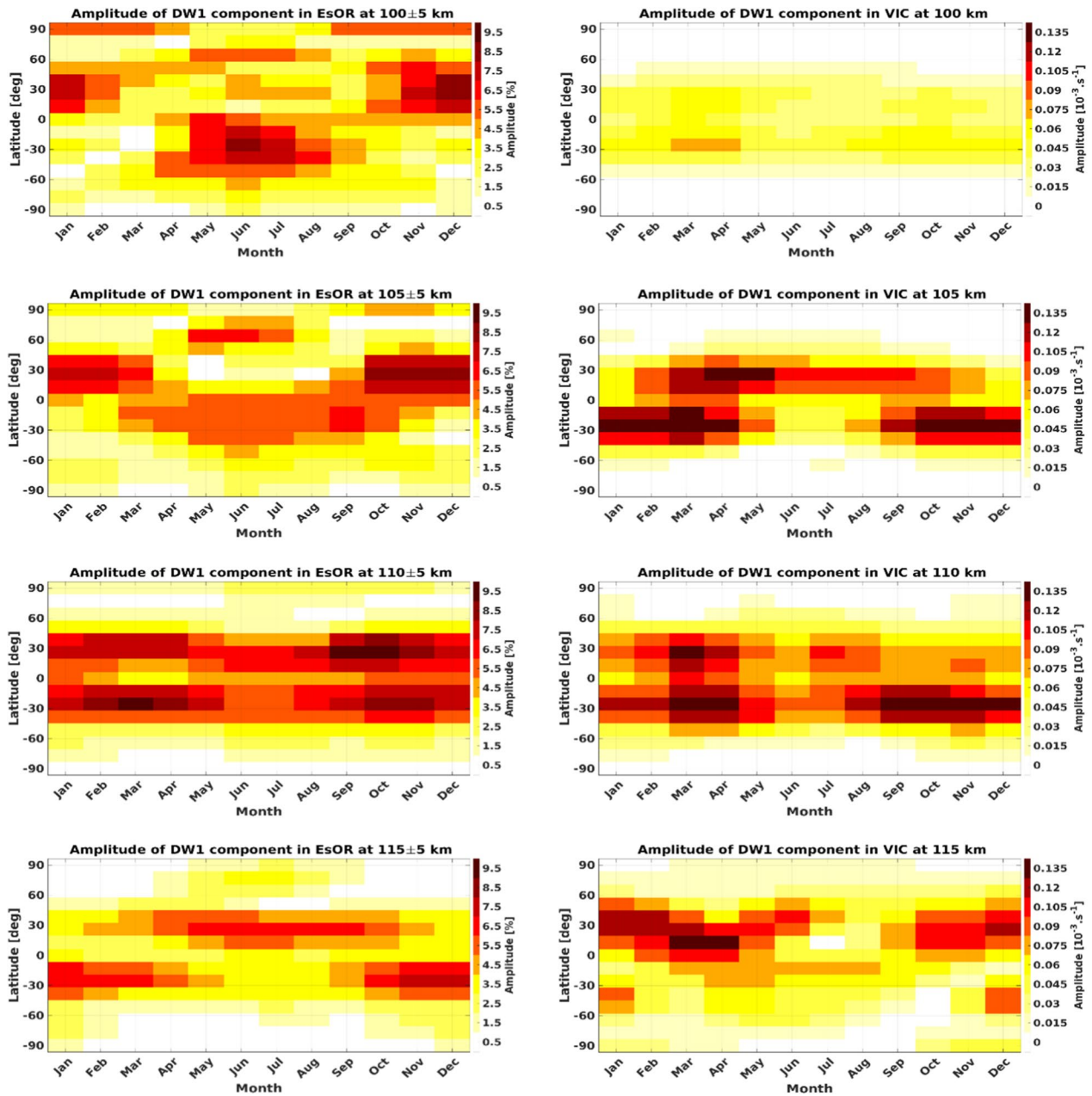


Fig. 5 Month-to-month amplitude variation of DW1 component of tides in EsOR (left column) and VIC (right column) at different altitudes

The correct Fig. 6 should be:

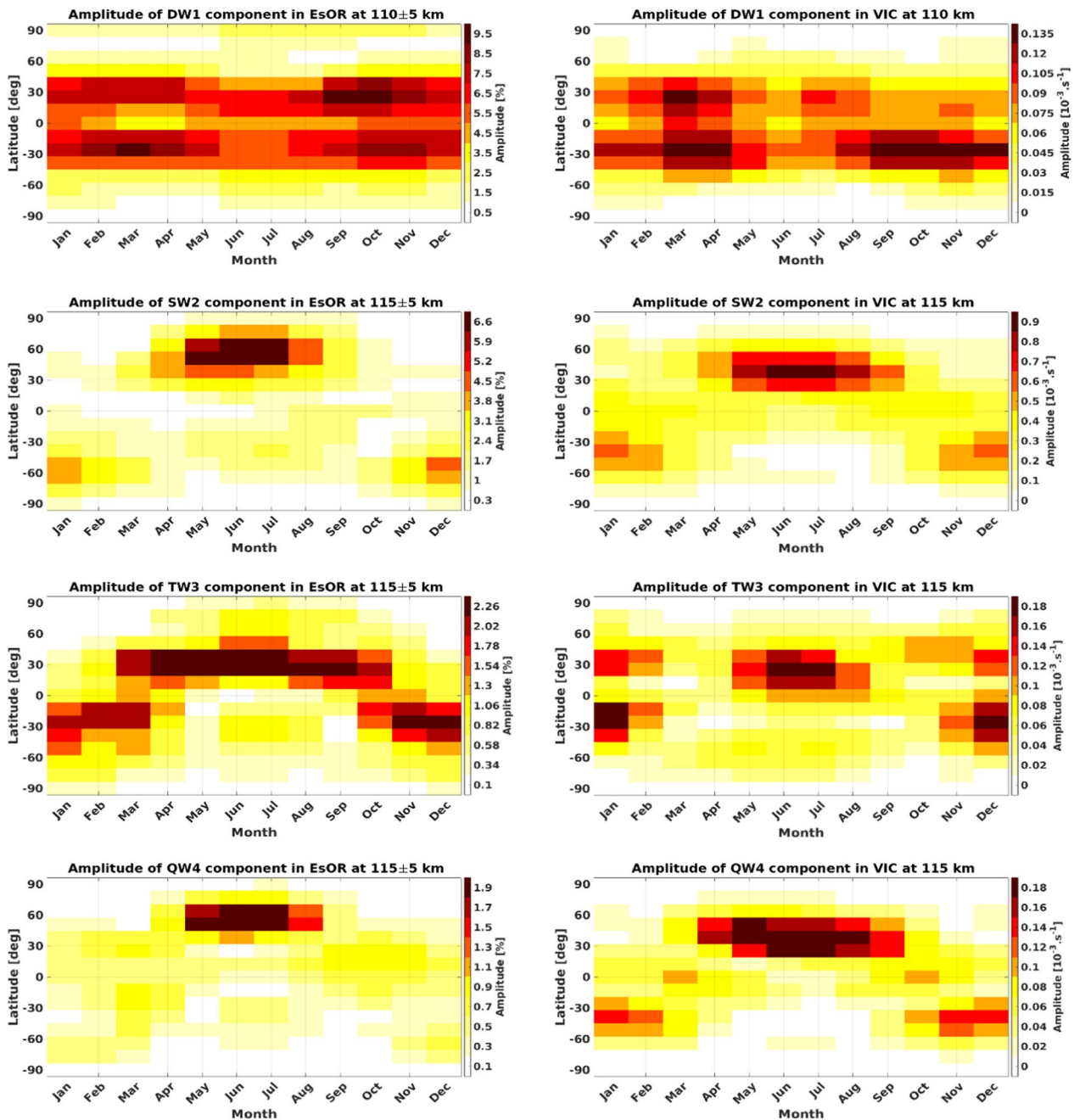


Fig. 6 Month-to-month amplitude variation of migrating components of tides in EsOR (left column) and VIC (right column)

The correct Fig. 7 should be:

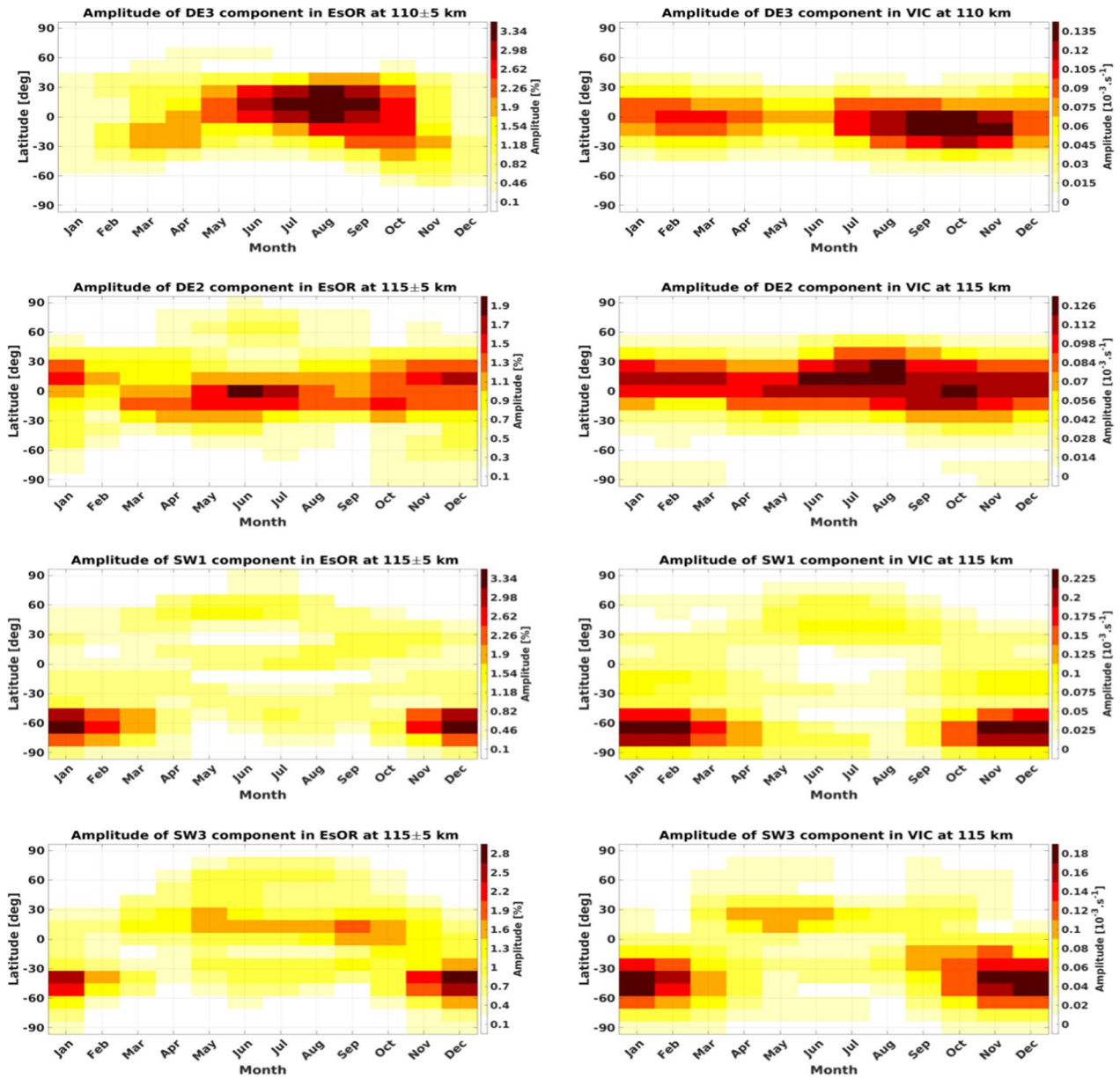


Fig. 7 Month-to-month amplitude variation of non-migrating components of tides in EsOR (left column) and VIC (right column)

The correct Fig. 8 should be:

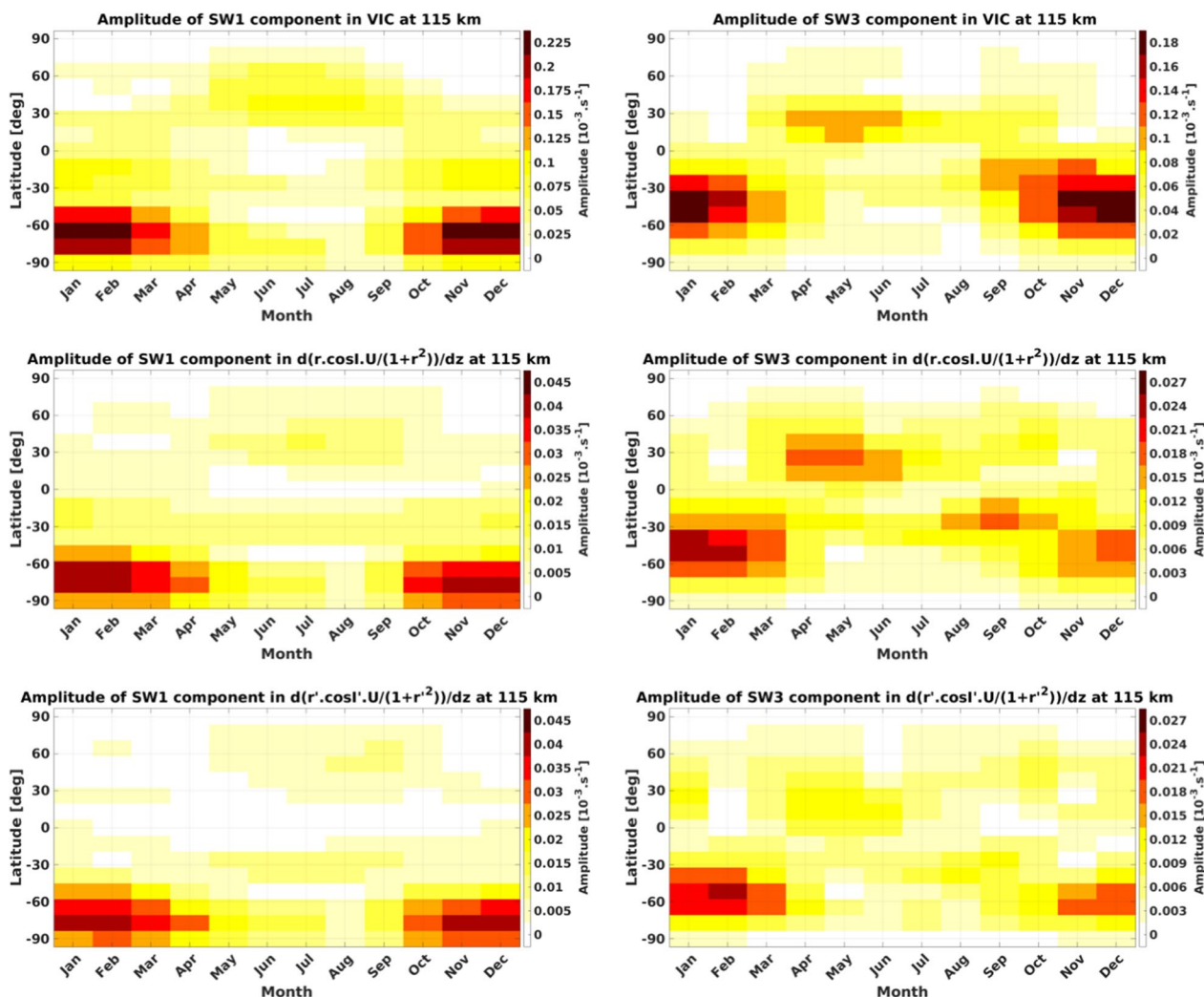


Fig. 8 Month-to-month amplitude variation of SW1 (left column) and SW3 (right column) components of VIC (first row), zonal wind term in VIC (second row) and the zonal wind term VIC without the effect of magnetic field zonal asymmetry (third row) at different altitudes

The original article (Sobhkhiz-Miandehi et al. 2022) has been updated.

Publisher’s Note

Springer Nature remains neutral with regard to jurisdictional claims in published maps and institutional affiliations.

Published online: 13 October 2023

Reference

Sobhkhiz-Miandehi S, Yamazaki Y, Arras C, Miyoshi Y, Shinagawa H (2022) Comparison of the tidal signatures in sporadic E and vertical ion convergence rate, using FORMOSAT-3/COSMIC radio occultation observations and GAIA model. *Earth Planets Space* 74:88. <https://doi.org/10.1186/s40623-022-01637-y>