

## ERRATA

### Joint inversion of strong motion and geodetic data for the source process of the 2003 Tokachi-oki, Hokkaido, earthquake

Kazuki Koketsu, Kazuhito Hikima, Shin'ichi Miyazaki, and Satoshi Ide

Earth Planets Space, Vol. 56, pp. 329–334, 2004

Owing to a publisher's error this paper was printed with Figs. 4, 6, 8, 11 and 14 in black and white in printed copies of the journal, rather than in color as the authors intended. The figures are correctly displayed in the online version of the paper (<http://www.terrapub.co.jp/journals/EPS/pdf/2004/5603/56030329.pdf>). Terra Scientific Publishing Company apologizes for any inconvenience caused by this error.

Figure 4 on p. 331 should be displayed as follows:

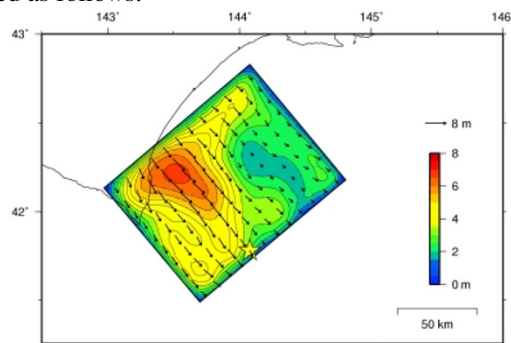


Fig. 4. Slip distribution recovered by the strong motion inversion ( $M_0: 2.5 \times 10^{21}$  N·m,  $M_w: 8.2$ ). The arrows indicate the slip vectors of the hanging wall relative to the foot wall.

Figure 6 on p. 331 should be displayed as follows:

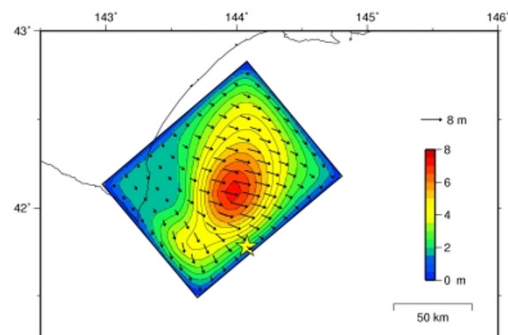


Fig. 6. Slip distribution recovered by the geodetic inversion ( $M_0: 2.0 \times 10^{21}$  N·m,  $M_w: 8.1$ ).

Figure 8 on p. 332 should be displayed as follows:

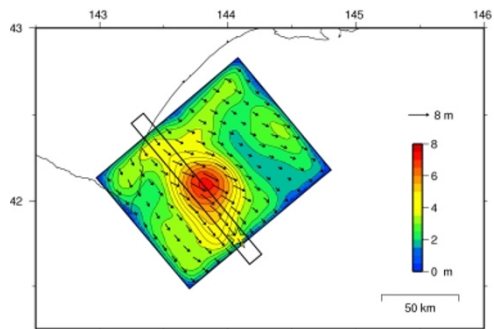


Fig. 8. Slip distribution recovered by the joint inversion ( $M_0$ :  $2.2 \times 10^{21}$  N-m,  $M_w$ : 8.2). The slip rate functions of the subfaults in the black rectangle will be shown in Fig. 12.

Figure 11 on p. 333 should be displayed as follows:

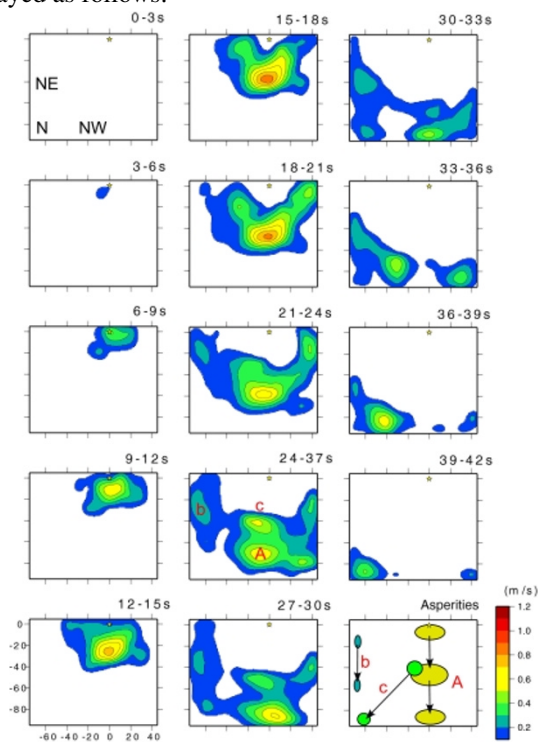


Fig. 11. Snapshots of the source process represented by the slip-rate distribution every 3 s. The bottom-right panel schematically illustrates the progress of the asperities.

Figure 14 on p. 333 should be displayed as follows:

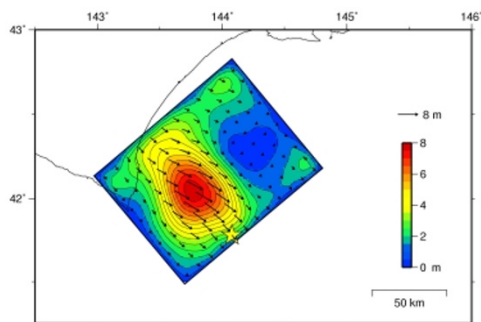


Fig. 14. Slip distribution by another joint inversion with ten time windows and a rise time of 2 s.