

ERRATUM

Open Access



Erratum to: Problems with mapping the auroral oval and magnetospheric substorms

E. E. Antonova^{1*}, V. G. Vorobjev², I. P. Kirpichev³, O. I. Yagodkina² and M. V. Stepanova⁴

Unfortunately, the original version of this article [1] contained a mistake. An incorrect version of Figure 3 was used. Figure 3 contains the results of pressure and pressure anisotropy calculations for very quiet geomagnetic conditions ($AL = -100$ nT and $Dst = -5$ nT). Pressure distribution on Figure 3 must be compared with pressure distribution obtained at low altitudes for the same conditions and shown on Fig. 1 of the paper.

The correct version of Figure 3, Fig. 1 here, is available below.

Author details

¹Skobeltsyn Institute of Nuclear Physics, Lomonosov Moscow State University, Moscow, Russia. ²Polar Geophysical Institute, Apatity, Murmansk Region, Russia. ³Space Research Institute RAS, Moscow, Russia. ⁴Physics Department, Science Faculty, Universidad de Santiago de Chile, Santiago, Chile.

Received: 5 November 2015 Accepted: 5 November 2015

Published online: 25 November 2015

Reference

1. Antonova EE, Vorobjev VG, Kirpichev IP, Yagodkina OI, Stepanova MV (2015) Problems with mapping the auroral oval and magnetospheric substorms. *Earth Planets Space* 67:166

Submit your manuscript to a SpringerOpen[®] journal and benefit from:

- Convenient online submission
- Rigorous peer review
- Immediate publication on acceptance
- Open access: articles freely available online
- High visibility within the field
- Retaining the copyright to your article

Submit your next manuscript at ► springeropen.com

* Correspondence: antonova@oearm.msk.ru

¹Skobeltsyn Institute of Nuclear Physics, Lomonosov Moscow State University, Moscow, Russia

Full list of author information is available at the end of the article

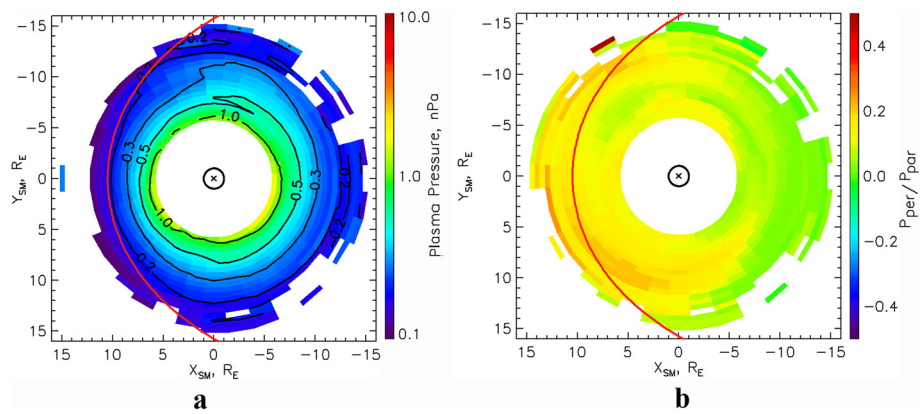


Fig. 1 Plasma pressure and pressure anisotropy in the equatorial plane during low geomagnetic activity. Results of the calculation of a pressure and b pressure anisotropy in the equatorial plane, from data of the THEMIS mission, for $AL = -100$ nT and $Dst = -5$ nT