

CORRECTION

Open Access



Correction: The sequence of the 2017–2018 eruptions and seismo-acoustic activity at Kirishima volcano group

Mie Ichihara^{1*} , Tsukasa Kobayashi², Fukashi Maeno¹, Takao Ohminato¹, Atsushi Watanabe¹, Setsuya Nakada³ and Takayuki Kaneko¹

Correction: *Earth, Planets and Space* (2023) 75: 144
<https://doi.org/10.1186/s40623-023-01883-8>

Due to a typesetting error, the Fig. 2L was partially missing in the original online version.

Following publication of the original article (Ichihara et al. 2023), the authors reported a mistake in Fig. 2L.

The correct Fig. 2 should read:

(See figure on next page.)

Fig. 2 **a** Northwesterly view of the Shinmoe-dake summit during the 2017 activity, taken by S. Nakada (14:29, October 11, 2017). **b** Eruption plume of the 2017 Shinmoe-dake eruption viewed from Shinyu hot springs on the southwestern foot of the edifice taken by T. Kaneko (October 12, 2017). **c** Southwesterly view of the summit during the 2018 Shinmoe-dake activity, taken by S. Nakada (shortly before 10:00, March 3, 2018). **d** Northeastly view of the effusing lava in the Shinmoe-dake summit crater taken by Mainichi Shinbun (5:20, March 6, 2018). **e** Close-up photograph of the effusing lava in the Shinmoe-dake summit crater taken by Mainichi Shinbun (5:17, March 6, 2018). **f** Westerly view of the Shinmoe-dake summit crater taken by S. Nakada (17:26, March 9, 2018). The tip of the northwestern margin of the lava filling the crater is about to flow down the slope (indicated by a yellow arrow). **g** Small Vulcanian eruption during the 2018 Shinmoe-dake activity taken from the southwest by S. Nakada (17:30, March 9, 2018). **h** Lava flow flowing down the northwestern slope of Shinmoe-dake, taken by S. Nakada (10:25, April 20, 2018). **i** Shinmoe-dake summit just before the Vulcanian eruption shown in “(j)” taken by S. Nakada (10:09, March 10, 2018). The ca. 150 m diameter area near the eruption site swells like a shield. **j** Vulcanian eruption occurred at the site shown in “(i)”, taken by S. Nakada (10:15, March 10, 2018). **k** Eruption site of the Vulcanian eruptions, located in the central part of the lava flow at the summit, taken by T. Kaneko from the east (March 13, 2018). Yellow arrows indicate pit craters. **l** Eruption site of the Vulcanian eruptions taken by F. Maeno from the west (April 15, 2018). **m** Vulcanian eruption on May 14, 2018, recorded by a JMA monitoring camera. **n** Westerly view of Iwo-yama and surrounding areas taken by JMA (April 21, 2018). **o** Activity of Iwo-yama immediately before the April 19 eruption, recorded by a JMA monitoring camera (15:38, April 19, 2018). **p** The April 19 Iwo-yama eruption recorded by a JMA monitoring camera (15:44, April 19, 2018)

The original article can be found online at <https://doi.org/10.1186/s40623-023-01883-8>.

*Correspondence:

Mie Ichihara
ichihara@eri.u-tokyo.ac.jp

¹ The Earthquake Research Institute, The University of Tokyo,
Tokyo 113-0032, Japan

² Japan Meteorological Agency, Tokyo, Japan

³ The National Research Institute for Earth Science and Disaster Resilience,
Tsukuba, Japan



© The Author(s) 2023. **Open Access** This article is licensed under a Creative Commons Attribution 4.0 International License, which permits use, sharing, adaptation, distribution and reproduction in any medium or format, as long as you give appropriate credit to the original author(s) and the source, provide a link to the Creative Commons licence, and indicate if changes were made. The images or other third party material in this article are included in the article's Creative Commons licence, unless indicated otherwise in a credit line to the material. If material is not included in the article's Creative Commons licence and your intended use is not permitted by statutory regulation or exceeds the permitted use, you will need to obtain permission directly from the copyright holder. To view a copy of this licence, visit <http://creativecommons.org/licenses/by/4.0/>.

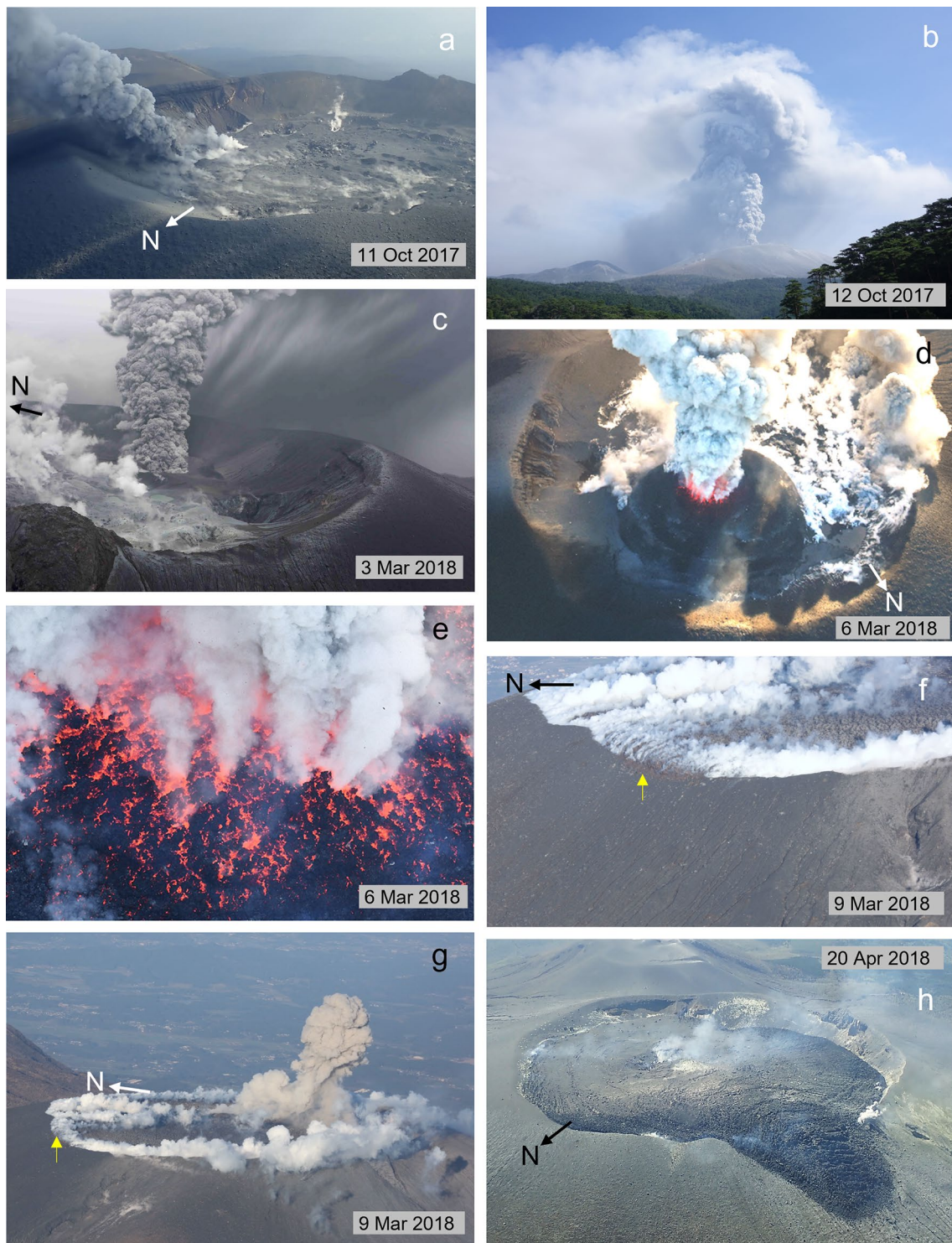


Fig. 2 (See legend on previous page.)

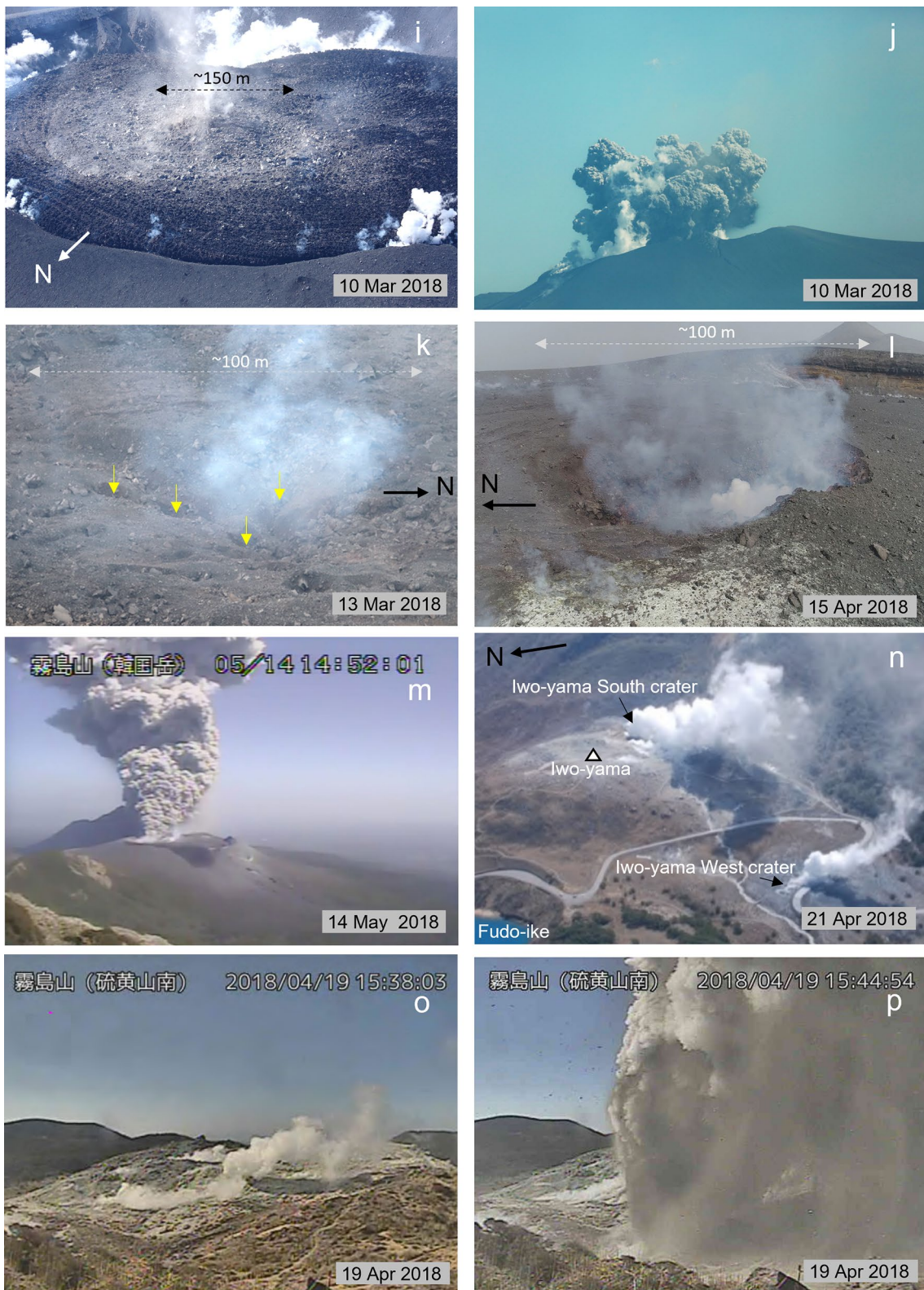


Fig. 2 continued

The original article (Ichihara et al. 2023) has been updated.

Published online: 06 November 2023

Reference

Ichihara M, Kobayashi T, Maeno F, Ohminato T, Watanabe A, Nakada S, Kaneko T (2023) The sequence of the 2017–2018 eruptions and seismo-acoustic activity at Kirishima volcano group. *Earth Planets Space* 75:144. <https://doi.org/10.1186/s40623-023-01883-8>

Publisher's Note

Springer Nature remains neutral with regard to jurisdictional claims in published maps and institutional affiliations.