

LETTER

Open Access

Noctilucent clouds observed from the ground: sensitivity to mesospheric parameters and long-term time series

Nikolay Pertsev^{1*}, Peter Dalin^{2,3}, Vladimir Perminov¹, Vitaly Romejko⁴, Audrius Dubietis⁵, Ričardas Balčiunas⁵, Kazimieras Černis⁶ and Mark Zalcik⁷

Abstract

Long-term systematic observations of noctilucent clouds in the regions of Moscow (Russia), Vilnius (Lithuania), and La Ronge (Canada) are considered. Variables, describing the seasonal activity of noctilucent clouds, are discussed. It is shown that there are no statistically significant trends within time intervals of several recent decades. This result is compared to other known findings on trends in mesospheric clouds. Based on the data of the modern ground-based noctilucent cloud observing network in the northern hemisphere and simultaneous satellite data on mesospheric temperature and humidity, we estimate sensitivity of noctilucent clouds to the relative humidity of the upper mesosphere. Such an approach allows us to discuss possible changes of the upper-mesospheric relative humidity, which are consistent with a zero secular trend in noctilucent cloud activity.

Keywords: Noctilucent clouds; Midlatitude mesosphere; Long-term trends; Mesospheric temperature; Mesospheric humidity

Findings

Introduction

There is an intense ongoing effort on studies of long-term trends in occurrence frequency and brightness of mesospheric clouds, termed noctilucent clouds (NLCs) as observed from the ground and polar mesospheric clouds (PMCs) as observed from the space, in connection to global climate change and related changes of upper atmosphere environment, in particular (Thomas 2003). However, the different approaches arrived to controversial conclusions on the subject which suggest either continuously increasing NLC numbers over Western Europe (Gadsden 1990, 1998) and PMC activity for sub-polar and polar latitudes (DeLand et al. 2006, 2007; Shettle et al. 2009) or zero-trends derived from ground-based observations (Romejko et al. 2002, 2003; Dalin et al. 2006; Kirkwood et al. 2008; Dubietis et al. 2010). The main reasons for these differences are attributed to different analyzed variables, different time intervals and latitude range

used for the analysis and inhomogeneity of the datasets (Dalin et al. 2006; Kirkwood et al. 2008). On the other hand, the established relationship between the time series describing the NLC/PMC activity, temperature, and water vapor (Hervig and Siskind 2006; Lübken et al. 2009) poses an important question what conclusions about the physical state of summer mesosphere may be obtained from the zero NLC trend result.

In this paper, the long-term trends in the ground-based NLC observations from Moscow (56°N, 37°E, Russia), Vilnius (55°N, 26°E, Lithuania), and La Ronge (55°N, 105°W, Canada) with corresponding latitudes of the observed NLC between 57° and 62°N are considered. It is found that a zero trend in NLC corresponds to a zero trend in the number of summer nights with the relative humidity more than 100% in the mesopause layer where NLC may exist. Our finding logically follows from the hypothesis that NLC presence or absence is governed mainly by temperature and humidity at mesospheric heights where NLC exist or are expected to be formed and is supported by comparing the satellite measurements of mesospheric temperature and

* Correspondence: n.pertsev@bk.ru

¹A.M.Obukhov Institute of Atmospheric Physics, RAS, Pyzhevskiy per., 3, Moscow 119017, Russia

Full list of author information is available at the end of the article

humidity and the data of international ground-based network of automated NLC cameras (Dalin et al. 2011).

Long-term ground-based NLC observations: variables, time series, trends

The methodology and data sets of ground-based NLC observations in Moscow (Russia), Vilnius (Lithuania), and La Ronge (Canada) are outlined in papers by Romejko et al. (2002), Romejko et al. (2003), Dubietis et al. (2010), Dubietis et al. (2011), and Zalcik et al. (2014). All three databases were published and discussed previously but never were considered together. It is important that in the present study, all three databases were updated up to the last observational season of 2013. The technique of NLC observations is about the same in all the databases. To consider year-to-year variability of NLC activity according to ground-based NLC observations, we use several variables and study the corresponding time series within the same year period. For every summer season, the following parameters are determined: the number of nights with NLC displays, the NLC brightness accumulated for the whole season, and the number of clear and semiclear weather nights. The latter is of paramount importance since the NLC activity

from ground-based observations is strongly biased by local tropospheric conditions. Also, as will be demonstrated below, the number of clear weather nights is a robust normalizing factor, when considering data sets with a different length of observational period.

Figure 1a demonstrates the number of NLC displays as observed from Moscow for 1990 to 2013. In general, the NLC activity anti-correlates (with a small possible lag) with the solar cycle (the maximum of the NLC activity coincides with the minimum of the solar activity) since amount of water molecules in the mesosphere is controlled by the UV solar flux (H_2O molecules photodissociate due to Ly alpha flux). Besides, there is a solar cycle influence on the mesospheric temperature (Beig et al. 2008). Therefore, we consider separately the effects due to long-term variations in time and influence of the solar cycle by applying a 2-D linear regression model (Figure 1b):

$$Y = b_1 \cdot (\text{time} - T_s) + b_2 \cdot Ly_\alpha + b_3, \quad (1)$$

where b_1 and b_2 are the regression coefficients for the time trend and for the solar Ly alpha flux (averaged for June to July of each year), respectively, b_3 is the constant,

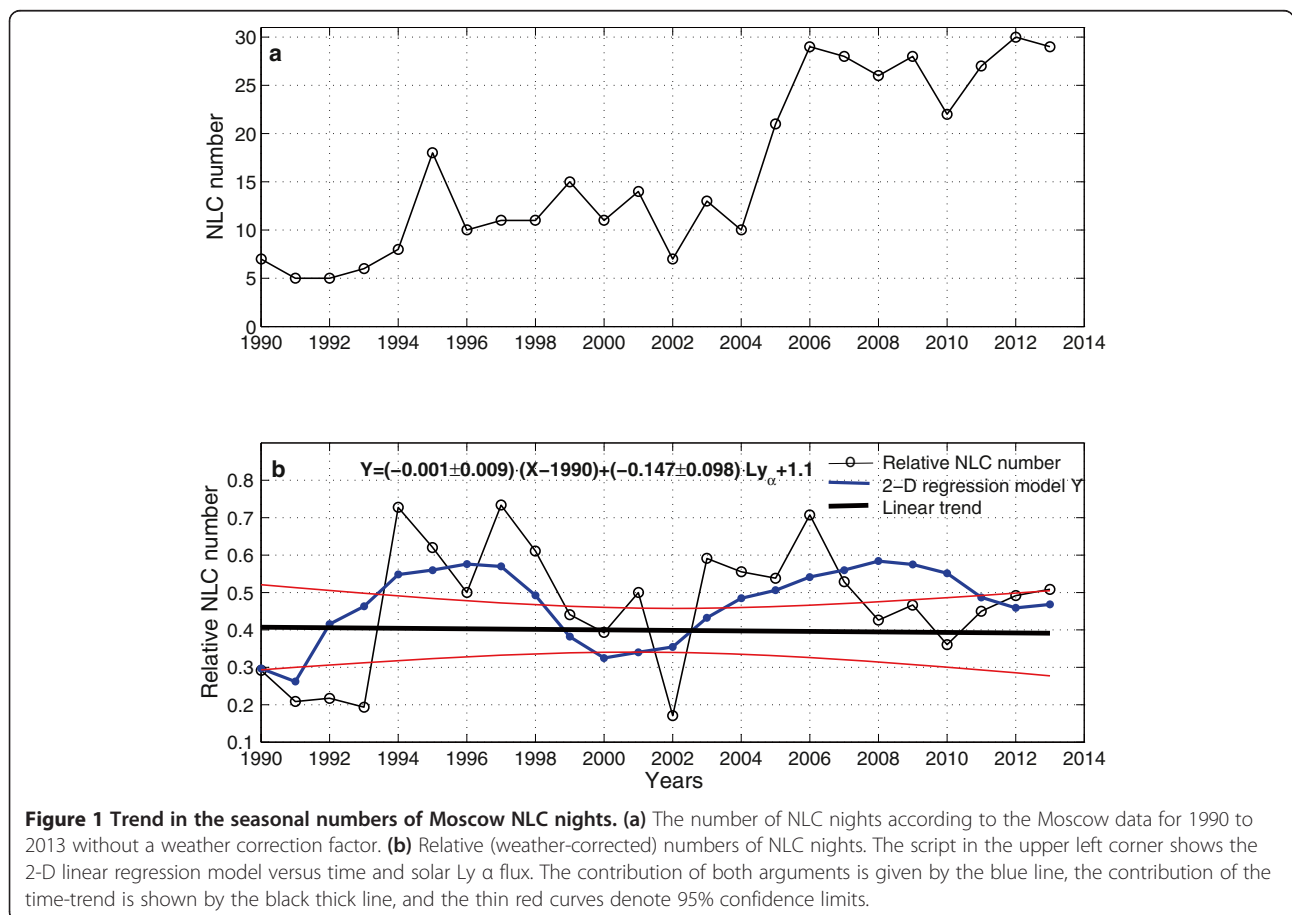


Figure 1 Trend in the seasonal numbers of Moscow NLC nights. (a) The number of NLC nights according to the Moscow data for 1990 to 2013 without a weather correction factor. (b) Relative (weather-corrected) numbers of NLC nights. The script in the upper left corner shows the 2-D linear regression model versus time and solar Ly alpha flux. The contribution of both arguments is given by the blue line, the contribution of the time-trend is shown by the black thick line, and the thin red curves denote 95% confidence limits.

and T_s is the start year of the time series. The solar Ly alpha flux has been analyzed by means of satellite data via Composite Solar Lyman-alpha (2007). In Equation 1, the Ly alpha flux component includes a potential phase lag relative to the NLC cycle, which is defined by a standard cross-correlation analysis between two periodic processes. The 2-D linear regression model is indicated by the blue curve, and the long-term trend (after subtraction of the solar component) is shown by the black thick line. The red curves show a 95% confidence interval for the long-term trend.

Figure 1a shows a significant increase in the NLC occurrence number since 2005. This is due to applying digital cameras ('digital era') in NLC observations, thus allowing us to conduct observations for a much longer (2.5 months) period of time compared to the previous 'visual era' (about 1 month) before 2005. At the same time, there is a robust way to compare the 'visual' and 'digital' era, namely, by considering the number of clear and semiclear weather nights in each observational season. If we normalize the NLC occurrence number by the number of clear and semiclear weather nights, we obtain weather-corrected relative NLC numbers for the entire time period, as shown in Figure 1b. The above mentioned

2-D regression analysis has been applied to the normalized or relative NLC occurrence number. One can see there is a slight negative trend which lacks statistical significance. One should note that we keep exactly the same local times (23:00 to 04:00) both for the visual and digital era, a great advantage of our ground-based NLC observations. Thus, there is no bias due to the local time changing. Figure 2a illustrates the time series of the Moscow NLC brightness for 1990 to 2013. One can see a similar pronounced feature, increased NLC brightness from the digital era of 2005. The relative NLC brightness (normalized by the number of clear and semiclear weather nights) is shown in Figure 2b, for which the same multiple regression analysis was applied. In agreement with the above finding for the NLC occurrence number, there is no statistically significant trend in the relative NLC brightness for more than two decades.

Very similar results for the relative NLC numbers after a weather correction were obtained for Lithuanian (Vilnius) and Canadian (La Ronge) data (Figures 3 and 4). A slightly positive statistically insignificant trend is derived for Lithuanian data, and a nearly zero trend for Canadian data. All the regression coefficients and their 95% confidence levels as well as phase lag vs. Ly alpha flux are summarized in

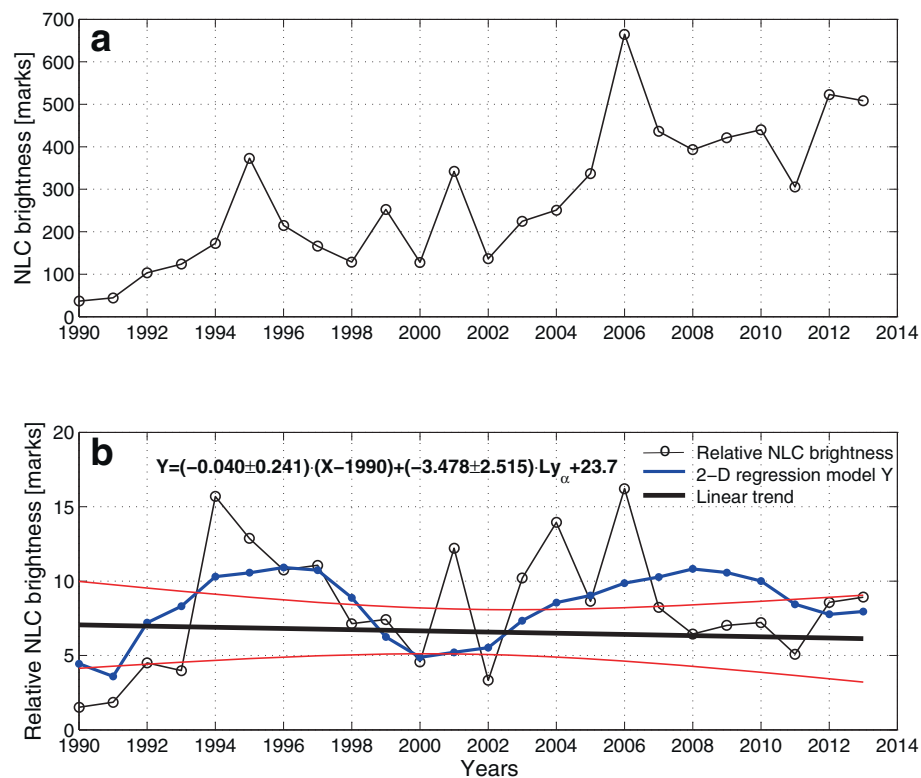


Figure 2 Trend in the Moscow seasonal integral NLC brightness. (a) The NLC brightness according to the Moscow data for 1990 to 2013 without a weather correction factor; (b) the same but with weather corrections. The script in the upper left corner shows the 2-D linear regression model versus time and solar Ly alpha flux. The contribution of both arguments is given by the blue line, the contribution of the time trend is shown by the black thick line, and the thin red curves denote 95% confidence limits.

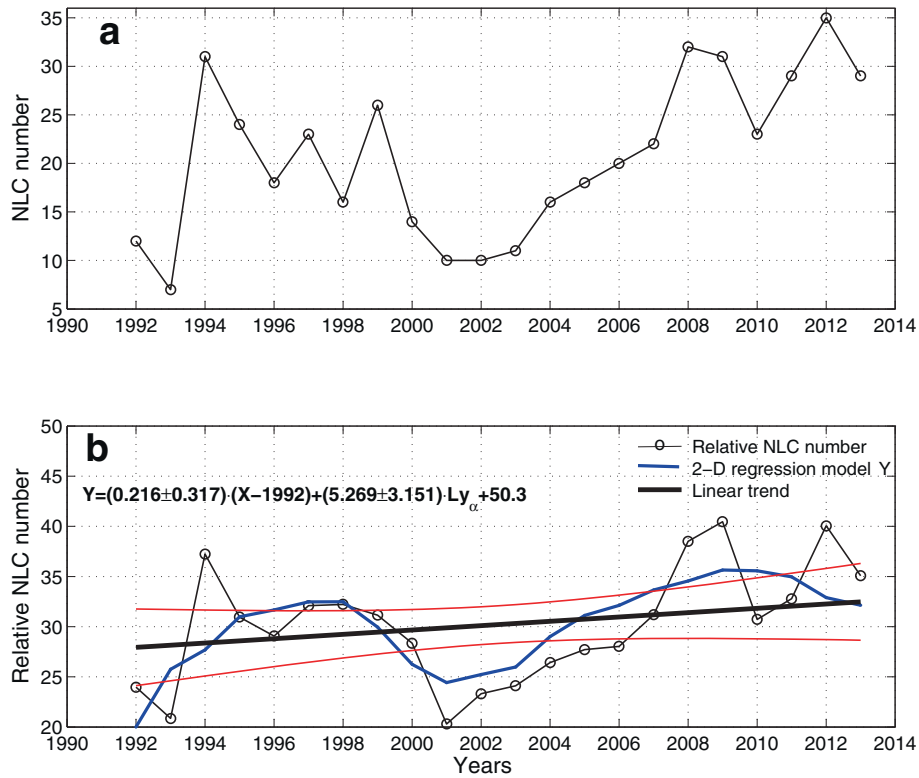


Figure 3 Trend in the seasonal numbers of Lithuanian NLC nights. The same as in Figure 1a, b but for the Lithuanian data sets in 1992 to 2013.

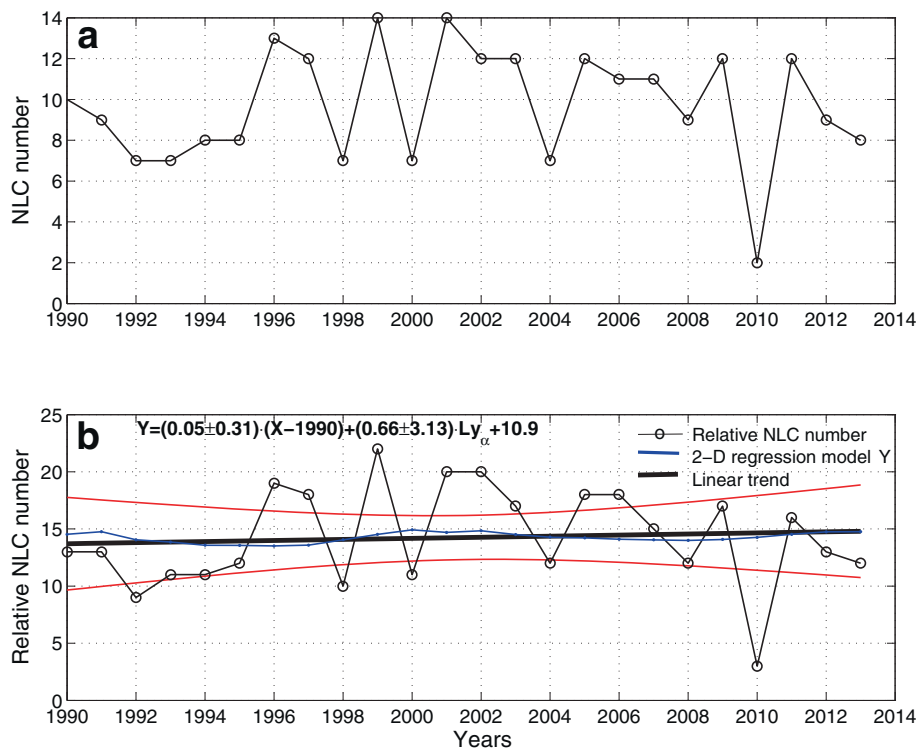


Figure 4 Trend in the seasonal numbers of Canadian NLC nights. The same as in Figure 1a, b but for the Canadian data sets in 1990 to 2013.

Table 1. Moscow and Lithuanian data have the statistically significant regression with Ly alpha flux and show the lag 0 to 1 year (over the anti-correlation) which is consistent with 0.8 years lag according to HALOE PMC extinction for 65 to 70°N (Hervig and Siskind 2006). Different scales for the relative NLC number in Figures 1b, 3b, and 4b are caused by different approaches taking into account tropospheric cloudiness as described in detail by Romejko et al. (2003) for the Moscow data, Dubietis et al. (2010) for the Lithuanian data, and Zalcik et al. (2014) for the Canadian data. Nevertheless, in all cases, within the considered time period (1990 to 2013), there was no statistically significant trend in both the weather-corrected NLC number over a season and the weather-corrected NLC brightness. A similar conclusion was derived by Dalin et al. (2006) for Moscow time series (1962 to 2005) and Moscow and Danish time series (1983 to 2005).

Trends in PMC and NLC

As suggested by Dalin and Pertsev (2011b), the alleged contradiction noted by many researchers, between the positive trend in PMC occurrence frequency (Shettle et al. 2009) and zero trend in NLC occurrence frequency, is reduced to a great extent when considering the same time intervals and the same latitude range (50 to 64°N) for PMC (Shettle et al. 2009) and for NLC data sets. Recently, the PMC time series obtained through the solar backscattered ultraviolet (SBUV) space-borne measurements were refined by DeLand and Thomas (2014), using a different setting for the PMC detection threshold (see the paper for details). The updated PMC trends are shown in Figure 5 for the same year range (1990 to 2013) as in Figures 1, 2, 3, and 4. The derived trends both in the PMC occurrence frequency and PMC albedo for 50 to 64°N are about zero (or even slightly negative, in contrast to previously published results (DeLand et al. 2006, 2007; Shettle et al. 2009) and statistically insignificant. Thus, the dispute regarding the disagreement between the mid-latitude PMC and NLC long-term trends should be put to rest.

Sensitivity of NLC to temperature and humidity of the upper mesosphere

Simultaneous satellite measurements of mesospheric temperature and humidity and the NLC occurrence frequency and brightness estimates from ground-based observations give an opportunity to study the NLC sensitivity to temperature and humidity of the summer mesopause. The first investigation in pursuing this relationship was carried out (Dalin et al. 2011) based on the data of the network of automated digital cameras (for 2007 and 2008, at six sites located at approximately 56°N around the globe) and MLS temperature and humidity measurements made from the Aura satellite closest to those individual sites (by longitude and time at the latitude 60°N and baric height of 0.46 Pa). The Aura/MLS temperature product and its validation are described in detail by Schwartz et al. (2008), and the validation of water vapor data is given by Lambert et al. (2007). Here, we combine the data from all the six sites for the two summer seasons; the result of this joint analysis is illustrated in Figure 6. The abscissa values represent the relative humidity, which was calculated from the Clausius-Clapeyron equation adopted from Gadsden and Schröder (1989) through the temperature and water vapor mixing ratio derived from MLS measurements. Due to small variations in the water vapor mixing ratio, the dependence of the relative humidity on temperature exhibits a power function (as seen in the semi-log plot). Figure 6 shows that the vast majority of NLC events correspond to temperature lower than 147 K and/or relative humidity greater or equal than 100%. The preferential choice should be probably given to the relative humidity as far as it is invariant to the mixing ratio. Figure 6 also demonstrates that there were several NLC cases coinciding with MLS relative humidity as small as 20 to 40%. On the other hand, there were some cases of NLC absence when the MLS instrument measured a strong supersaturation of 1,000 to 10,000%. Both situations should be caused by a large difference in relative humidity between the original region of the NLC

Table 1 Two-dimensional regression analysis: coefficients for Equation 1

Time series	Year range	b_1 number/year	b_2 number/Lya	b_3	Lag (years)
Moscow relative NLC number	1990 to 2013	-0.001 ± 0.009	-0.15 ± 0.10	1.1 ± 0.5	0
Moscow relative NLC brightness	1990 to 2013	-0.040 ± 0.241	-3.48 ± 2.52	23.7 ± 12.4	0
Lithuanian relative NLC number	1992 to 2013	0.216 ± 0.317	-5.27 ± 3.15	50.3 ± 15.0	1
Canadian relative NLC number	1990 to 2013	0.048 ± 0.310	0.66 ± 3.13	10.9 ± 15.5	2
PMC frequency	1990 to 2013	-0.030 ± 0.035	-0.68 ± 0.36	5.0 ± 1.8	0
PMC albedo	1990 to 2013	-0.009 ± 0.031	-0.13 ± 0.28	5.9 ± 1.5	2

The table contains the results of ground-based NLC observations and of the space-borne PMC measurements at 50 to 64°N (the latter are consistent with DeLand and Thomas (2014) and are provided by M. DeLand). Lag equal to 0 means that the NLC/PMC cycle is exactly in the anti-correlation with the solar cycle, while positive lag means that the maximum of NLC/PMC is delayed with respect to minimum of Ly alpha flux.

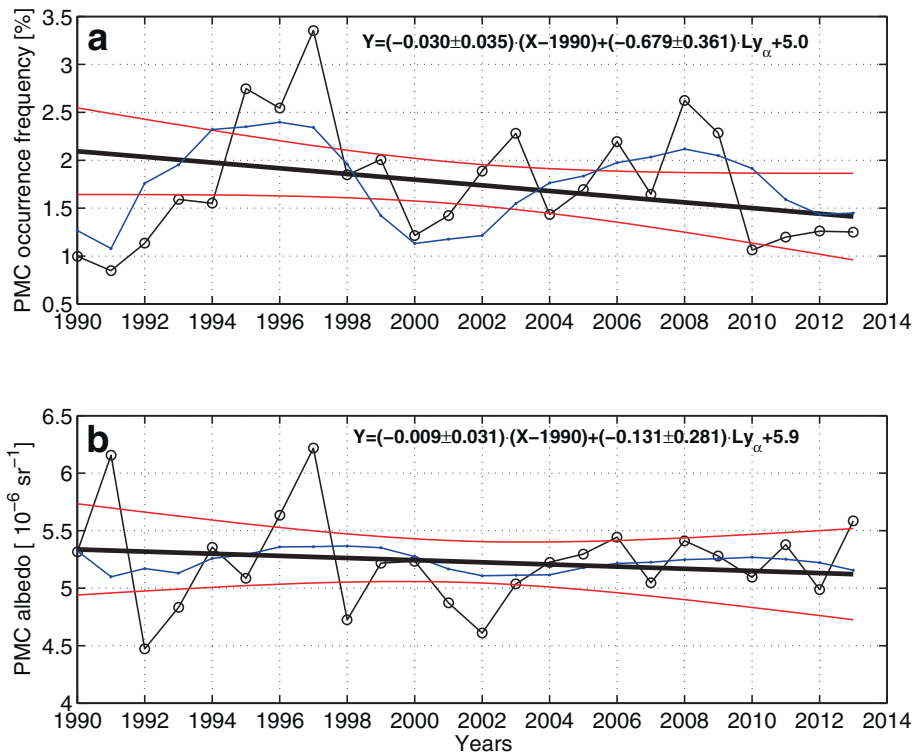


Figure 5 Trend in PMC activity. The same as in Figure 1b, but for PMC occurrence frequency and albedo at 50 to 64°N. The data consistent with DeLand and Thomas (2014) are provided by M. DeLand.

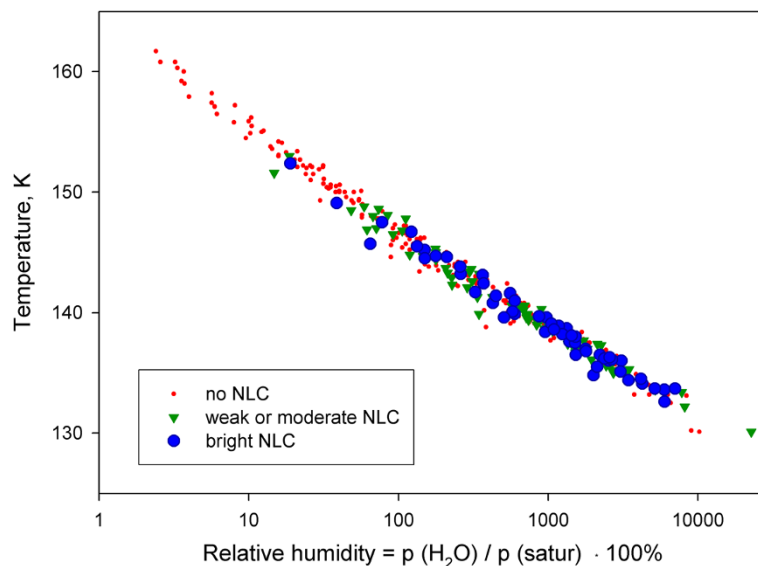


Figure 6 Dependence of NLC presence/absence on mesospheric conditions. Results of the summer temperature and humidity measurements in 2007 and 2008 by the MLS/Aura instrument at 60°N and baric height of 0.46 Pa. The longitude and time are taken as closest to a single event at each of the sites of the Northern hemisphere network for noctilucent clouds observation: namely, either for absence of NLC under clear weather (red dots) or NLC occurrence of small brightness (green triangles) or occurrence of bright NLC (blue circles).

formation and the region being observed and/or by the limb viewing geometry of the MLS instrument with a line-of-sight horizontal resolution of several hundreds of kilometers. Besides, spatial variations (due to large-scale gravity waves with wavelengths of more than 300 km) in the relative humidity may also play a certain role. A warm phase of a gravity wave (might be up to 20 K) could meet a mesospheric cloud, producing a gradual increase (during several hours) of the air temperature and hence decreasing the relative humidity of the air. However, ice particles should not immediately sublimate due to this process. Gadsden and Schröder (1989) have demonstrated that it takes, on average, 1–2 h to completely sublimate an ice particle of initial radius of 100 nm in the summer mesopause environment. Thus, it is possible to observe NLC/PMC under the relative humidity of less than 100% for a certain time interval up to 2 h. Along this line, Rong et al. (2012) have discussed that ‘the clouds are ubiquitous and exist at locations where the temperature is warmer than the frost point.’

Additional convincing evidence of mesospheric clouds' sensitivity to the relative humidity has been given by Rong et al. (2012). According to their results based on satellite measurements at 65 to 85°N around the summer mesopause, there is fairly high correlation (for the sufficiently bright clouds at least) between the cloud ice mass densities observed and ones calculated from the cloud model suggesting the cloud ice mass density is proportional to the difference between water vapor pressure and the one for the saturated vapor.

Zero trend in NLC and derived conclusions about the physical state of the summer mesosphere

The aforementioned results on sensitivity of mesospheric clouds to the surrounding air temperature and humidity yield, with some reservations, a tentative hypothesis that the NLC presence or absence at approximately 60°N is controlled mainly by temperature and humidity of the surrounding air. Therefore, a zero trend in the number of NLC suggests a zero trend in the number of summer nights with relative humidity more or equal to 100%, at least for the year range considered. The complete NLC absence before 1885 (Gadsden and Schröder 1989; Dalin et al. 2012) corresponds to another climate condition of the summer mesosphere, that is, the relative humidity lower than 100% in the entire NLC environment. It might be due to either much higher summer mesosphere temperatures or a much lower water vapor mixing ratio, shifting substantially downward the temperature - relative humidity dependence in Figure 6. Thus, the approach based on the NLC sensitivity to the relative humidity agrees with the idea of Thomas et al. (1989): ‘...before 1885 there was insufficient water vapor routinely available at the mesopause to form visible clouds.’ Moreover, since there are no statistically significant

long-term trends in both the Moscow NLC brightness and satellite PMC brightness at midlatitudes, one can draw a conclusion regarding a zero long-term trend in the amount of water vapor in the summer mesopause, since NLC/PMC brightness is very sensitive to the H₂O concentration, with the power index varied between 4 and 8, depending on model parameters (Thomas et al. 1989).

One can estimate uncertainties in the water vapor long-term trend based on our brightness trend uncertainties. The Moscow NLC brightness trend was estimated as -0.4 ± 2.4 for a 10-year time interval. In other words, the Moscow NLC brightness trend should increase by 6 times ($2.4/0.4 = 6$) for 10 years to be statistically significant. If we take the power index varied between 4 and 8 by Thomas et al. (1989), we arrive at changes in the H₂O concentration as between 1.6 and 1.3 times, respectively. If we take the power index varied between 2 and 3 by Lübken et al. (2007), we arrive at changes in the H₂O concentration as between 2.5 and 1.8 times, respectively. The both estimates are huge for a 10-year time interval and would be clearly detected by current satellite measurements at mid-latitudes, but this is not the case. However, estimations given above are based on the suggestion of a zero trend in temperature of the summer mesopause. In this situation, a nearly zero trend in the NLC/PMC brightness at mid-latitude should indicate on a nearly zero trend in the amount of water vapor of the summer mesopause to keep the relative humidity unchanged. Generally, the both trends in temperature and water mixing ratio should be either statistically insignificant or of the same sign, otherwise the number of nights with 100% relative humidity and NLC brightness would not show a nearly zero trend.

Summary

1. According to the regular noctilucent cloud observations near Moscow, Russia (56°N, 36°E), Vilnius, Lithuania (55°N, 26°E), and La Ronge, Canada (55°N, 105°W), during the period 1990 or 1992 to 2013, there is no statistically significant trend in either the NLC occurrence frequency nor in the NLC brightness when a weather correction to the NLC data is applied.
2. A comparison of long-term trends by satellite PMC observations and ground-based NLC observations reveals no substantial differences during the same year range at mid-latitudes.
3. A joint analysis of ground-based NLC observations and Aura satellite temperature and humidity measurements near the locations of NLC shows that the vast majority of observed noctilucent clouds correspond to the condition of saturated or supersaturated water vapor.

- The hypothesis of temperature and humidity controlling the NLC occurrence, supported by the previous point of the summary, suggests a zero trend in a number of the summer nights with saturated or supersaturated water vapor pressure in the upper mesosphere.
- Nearly zero long-term trends in both the Moscow NLC and satellite PMC brightness at mid-latitudes suggest trends in upper mesospheric temperature and water mixing ratio that are either both statistically insignificant or of the same sign at the considered time interval (1990 to 2013) and latitude range 57 to 62°N.

Abbreviations

NLC: noctilucent clouds; PMC: polar mesosphere clouds; SBUV: solar backscattered ultraviolet radiation.

Competing interests

The authors declare that they have no competing interests.

Authors' contributions

NP formulated and checked statistically one of the main ideas of the manuscript (about the relative humidity threshold for NLC) and drafted a large part of the manuscript. PD carried out statistical calculations for Moscow database and PMC and prepared main final illustrations. VP participated in the first-level data analysis for Moscow database after 2005 and helped to draft a manuscript and to prepare its final version. VR carried out the first-level data analysis for Moscow database before 2005 and participated in coordination. AD carried out most of the Lithuanian data related part of work and suggested substantial improvements in the first version of the manuscript. RB participated in the first-level data analysis and the design of results for Lithuanian database. KČ carried out the weather correction of the relative NLC numbers for the Lithuanian database. MZ carried out the Canadian data-related part of work and helped with the final version of the manuscript. All authors read and approved the final manuscript.

Acknowledgements

We are grateful to Matthew DeLand for providing us with the SBUV PMC data at mid-latitudes for 1990 to 2013. Thanks to the staff at the La Ronge Saskatchewan flight service station for their enthusiastic voluntary observing efforts since 1988. Thanks to all people participating in the Moscow NLC observing program in 1990 to 2013. The authors thank also Peter Völger, Evgenia Belova, Sheila Kirkwood, and Uwe Raffalski for the very useful comments and discussion during the manuscript preparation. The paper benefited from constructive comments and suggestions made by two anonymous reviewers.

Author details

¹A.M.Obukhov Institute of Atmospheric Physics, RAS, Pyzhevskiy per., 3, Moscow 119017, Russia. ²Swedish Institute of Space Physics, Box 812, Kiruna SE-981 28, Sweden. ³Space Research Institute, Profsoyuznaya st. 84/32, Moscow 117997, Russia. ⁴The Moscow Association for NLC research, Kosygina st., 17, Moscow 119334, Russia. ⁵Department of Quantum Electronics, Vilnius University, Sauletekio Ave. 9, Building 3, Vilnius LT-10222, Lithuania. ⁶Institute of Theoretical Physics and Astronomy, Vilnius University, A. Gostauto 12, Vilnius LT-01108, Lithuania. ⁷NLC CAN AM, #7 14130 80 Street, Edmonton, AB T5C 1 L6, Canada.

Received: 29 March 2014 Accepted: 16 August 2014

Published: 26 August 2014

References

Beig G, Scheer J, Mlynczak MG, Kekhut P (2008) Overview of the temperature response in the mesosphere and lower thermosphere to solar activity. *Rev Geophys* 46:RG3002, doi:10.1029/2007RG000236.

- Composite Solar Lyman-alpha (2007) LISIRD. http://asp.colorado.edu/lisird/tss/composite_lyman_alpha.html. Accessed 29 Oct 2007
- Dalin P, Kirkwood S, Andersen H, Hansen O, Pertsev N, Romejko V (2006) Comparison of long-term Moscow and Danish NLC observations: statistical results. *Ann Geophys* 24:2841–2849
- Dalin P, Pertsev N, Dubietis A, Zalcik M, Zadorozhny A, Connors M, Schofield I, McEwan T, McEachran I, Frandsen S, Hansen O, Andersen H, Sukhodoev V, Perminov V, Balčiunas R, Romejko V (2011) A comparison between ground-based observations of noctilucent clouds and Aura satellite data. *J Atmos Sol-Terr Phys* 73:2097–2109
- Dalin P, Pertsev N (2011b) Additional notes about NLC long-term behavior according to visual observations. In: Project 3 PMC/NLC altitude, frequency and brightness changes related to changes in dynamics and chemical composition., http://www.cawses.org/wiki/index.php/Project_3_PMC/NLC_altitude_frequency_and_brightness_changes_related_to_changes_in_dynamics_and_chemical_composition. Accessed 23 Mar 2011
- Dalin P, Pertsev N, Romejko V (2012) Notes on historical aspects on the earliest known observations of noctilucent clouds. *Hist Geo Space Sci* 3:87–97
- DeLand MT, Shettle EP, Thomas GE, Olivero JJ (2006) A quarter-century of satellite polar mesospheric cloud observations. *J Atmos Sol-Terr Phys* 68:9–29
- DeLand MT, Shettle EP, Thomas GE, Olivero JJ (2007) Latitude-dependent long-term variations in polar mesospheric clouds from SBUV version 3 PMC data. *J Geophys Res* 112, D10315, doi:10.1029/2006JD007857.
- DeLand MT, Thomas GE (2014) Updated PMC trends derived from SBUV data. *J Geophys Res* in press
- Dubietis A, Dalin P, Balčiunas R, Černis K (2010) Observations of noctilucent clouds from Lithuania. *J Atmos Sol-Terr Phys* 72:1090–1099
- Dubietis A, Dalin P, Balčiunas R, Černis K, Pertsev N, Sukhodoev V, Perminov V, Zalcik M, Zadorozhny A, Connors M, Schofield I, McEwan T, McEachran I, Frandsen S, Hansen O, Andersen H, Grønne J, Melnikov D, Manevich A, Romejko V (2011) Noctilucent clouds: modern ground-based photographic observations by a digital camera network. *Appl Opt* 50(28):F72–F79, doi:10.1364/AO.50.000F72.
- Gadsden M (1990) A secular change in noctilucent clouds occurrence. *J Atmos Terr Phys* 52:247–251
- Gadsden M (1998) The North-West Europe data on noctilucent clouds: a survey. *J Atmos Sol-Terr Phys* 60:1163–1174
- Gadsden M, Schröder W (1989) Noctilucent clouds. Springer-Verlag, Berlin
- Hervig M, Siskind D (2006) Decadal and inter-hemispheric variability in polar mesospheric clouds, water vapor and temperature. *J Atmos Sol-Terr Phys* 68:30–41
- Kirkwood S, Dalin P, Rechou A (2008) Noctilucent clouds observed from the UK and Denmark - trends and variations over 43 years. *Ann Geophys* 26:1243–1254
- Lambert A, Read WG, Livesey NJ, Santee ML, Manney GL, Froidevaux L, Wu DL, Schwartz MJ, Pumphrey HC, Jimenez C, Nedoluha GE, Cofield RE, Cuddy DT, Daffer WH, Drouin BJ, Fuller RA, Jarnot RF, Knosp BW, Pickett HM, Perun VS, Snyder WW, Stek PC, Thurstans RP, Wagner PA, Waters JW, Jucks KW, Toon GC, Stachnik RA, Bernath PF, Boone CD et al (2007) Validation of the aura microwave limb sounder middle atmosphere water vapor and nitrous oxide measurements. *J Geophys Res* 112:D24S36, doi:10.1029/2007JD008724.
- Lübken F-J, Rapp M, Strelnikova I (2007) The sensitivity of mesospheric ice layers to atmospheric background temperatures and water vapor. *Adv Space Res* 40:794–801
- Lübken F-J, Berger U, Baumgarten G (2009) Stratospheric and solar cycle effects on long-term variability of mesospheric ice clouds. *J Geophys Res* 114, D00106, doi:10.1029/2009JD012377
- Romejko VA, Pertsev NN, Dalin PA (2002) Long-term observations of noctilucent clouds in Moscow: a database and statistical analysis. *Geomagn Aeron* 42:670–675
- Romejko VA, Dalin PA, Pertsev NN (2003) Forty years of noctilucent cloud observations near Moscow: database and simple statistics. *J Geophys Res* 108(D8):8443, doi:10.1029/2002JD002364
- Rong PP, Russell JM III, Hervig ME, Bailey SM (2012) The roles of temperature and water vapour at different stages of the polar mesosphere cloud season. *J Geophys Res* 117, D04208, doi:10.1029/2011JD016464.
- Schwartz MJ, Lambert A, Manney GL, Read WG, Livesey NJ, Froidevaux L, Ao CO, Bernath PF, Boone CD, Cofield RE, Daffer WH, Drouin BJ, Fetzer EJ, Fuller RA, Jarnot RF, Jiang JH, Jiang YB, Knosp BW, Krüger K, Li J-LF, Mlynczak MG, Pawson S, Russell JM III, Santee ML, Snyder WW, Stek PC, Thurstans RP, Tompkins AM, Wagner PA, Walker KA et al (2008) *J Geophys Res* 113:D15S11, doi:10.1029/2007JD008783.

- Shettle EP, DeLand MT, Thomas GE, Olivero JJ (2009) Long term variations in the frequency of polar mesospheric clouds in the Northern Hemisphere from SBUV. *Geophys Res Lett* 36, L02803, doi:10.1029/2008GL036048.
- Thomas GE (2003) Are noctilucent clouds harbingers of global change in the middle atmosphere? *Adv Space Res* 32:1737–1746
- Thomas GE, Olivero JJ, Jensen EJ, Schroeder W, Toon OB (1989) Relation between increasing methane and the presence of ice clouds at the mesopause. *Nature* 338:490–492
- Zalcik MS, Noble MP, Dalin P, Robinson M, Boyer D, Dzik Z, Heyhurst M, Kunnunpuram JG, Mayo K, Toering G, Toering M, Wooden K, Creusot N, Hengen B, McVey S, Packham C, Prokop G, Wilson L, Connors M, Schofield I (2014) In search of trends in noctilucent cloud incidence from the La Ronge flight service station (55 N 105W). *J Roy Astron Soc Can* 108:148–155

doi:10.1186/1880-5981-66-98

Cite this article as: Pertsev *et al.*: Noctilucent clouds observed from the ground: sensitivity to mesospheric parameters and long-term time series. *Earth, Planets and Space* 2014 **66**:98.

Submit your manuscript to a SpringerOpen[®] journal and benefit from:

- ▶ Convenient online submission
- ▶ Rigorous peer review
- ▶ Immediate publication on acceptance
- ▶ Open access: articles freely available online
- ▶ High visibility within the field
- ▶ Retaining the copyright to your article

Submit your next manuscript at ▶ springeropen.com
