

CORRECTION

Open Access



Correction to: Influence of crustal lithology and the thermal state on microseismicity in the Wakayama region, southern Honshu, Japan

Sumire Maeda^{1*} , Shinji Toda², Toru Matsuzawa³, Makoto Otsubo⁴ and Takumi Matsumoto¹

Correction to: *Earth Planets and Space* (2021) 73:173

<https://doi.org/10.1186/s40623-021-01503-3>

Following publication of the original article (Maeda et al. 2021), it was noticed that the epicenter distribution in Fig. 2 was different from the original one which the authors had submitted.

The correct Fig. 2 has been provided in this Correction. The original article (Maeda et al. 2021) has been updated.

The original article can be found online at <https://doi.org/10.1186/s40623-021-01503-3>.

*Correspondence: maeda.sumire@bosai.go.jp

¹ National Research Institute for Earth Science and Disaster Resilience, 3-1 Tennodai Tsukuba, Ibaraki 305-0006, Japan

Full list of author information is available at the end of the article



© The Author(s) 2021. **Open Access** This article is licensed under a Creative Commons Attribution 4.0 International License, which permits use, sharing, adaptation, distribution and reproduction in any medium or format, as long as you give appropriate credit to the original author(s) and the source, provide a link to the Creative Commons licence, and indicate if changes were made. The images or other third party material in this article are included in the article's Creative Commons licence, unless indicated otherwise in a credit line to the material. If material is not included in the article's Creative Commons licence and your intended use is not permitted by statutory regulation or exceeds the permitted use, you will need to obtain permission directly from the copyright holder. To view a copy of this licence, visit <http://creativecommons.org/licenses/by/4.0/>.

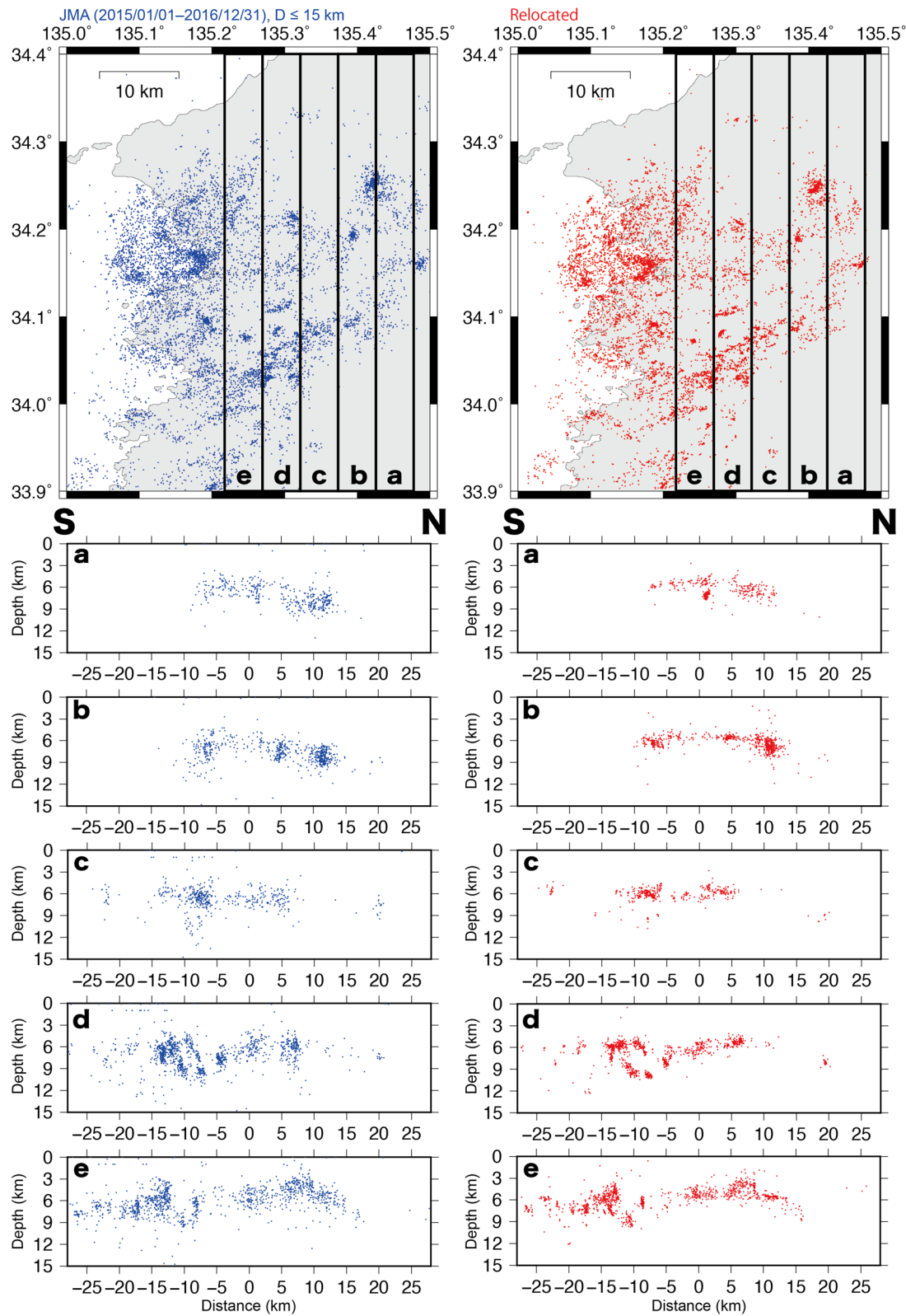


Fig. 2 Distributions of the original hypocenters from the JMA unified catalog (blue dots; left panel) and relocated hypocenters (red dots; right panel). Cross-sections of the hypocenter distributions within the rectangles **a–e** are shown to highlight the hypocenter distributions

Author details

¹National Research Institute for Earth Science and Disaster Resilience, 3-1 Tennodai Tsukuba, Ibaraki 305-0006, Japan. ²International Research Institute of Disaster Science, Tohoku University, 468-1 Aza-Aoba, Aramaki, Aoba-ku, Sendai 980-0845, Japan. ³Graduate School of Science, Tohoku University, 6-6 Aza-Aoba, Aramaki, Aoba-ku, Sendai 980-8578, Japan. ⁴Geological Survey of Japan, National Institute of Advanced Industrial Science and Technology, AIST, Tsukuba Central 7, Higashi-1-1-1, Tsukuba, Ibaraki 305-8567, Japan.

Published online: 09 November 2021

Reference

Maeda S, Toda S, Matsuzawa T, Otsubo M, Matsumoto T (2021) Influence of crustal lithology and the thermal state on microseismicity in the Wakayama region, southern Honshu, Japan. *Earth Planets Space* 73:173. <https://doi.org/10.1186/s40623-021-01503-3>

Publisher's Note

Springer Nature remains neutral with regard to jurisdictional claims in published maps and institutional affiliations.